

MOON LIGHT BLADE



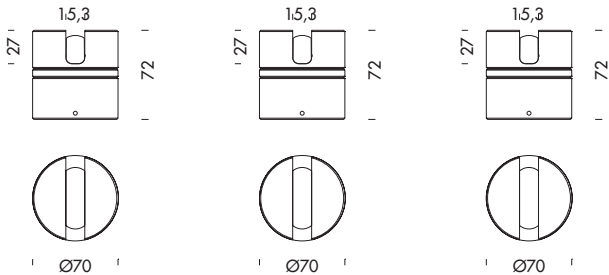
PERFORMANCE DATA

TRUE POWER (W)	5.0W	7.0 (ALL COLORS)	7.0 (ALL COLORS)
TRUE LUMENS (3000K)	708 (.71)	R=42, G=154,	R=42, G=154,
TRUE LUMENS (4000K)	804 (.71)	B=25, W=173 (6500K)	B=25, W=173 (6500K)
L90 LIFETIME (HRS)	50.000 (Ta 35°C)	60.000 - Ta 35°C	60.000 - Ta 35°C

BUILD DATA

CLASS	III	III	III
NOMINAL VOLTAGE	24V DC - DIMMABLE	24V DC - 4xPWM-CV	24V DC - DMX (RDM)
POWER SUPPLY	SEE END OF SECTION	SEE END OF SECTION	SEE END OF SECTION
EXTERNAL CABLE	SINGLE INPUT	SINGLE INPUT	SINGLE INPUT
	2-POLES NEOPRENE	6-POLES FEP + RUBBER	5-POLES FEP + RUBBER
PROTECTION RATING	IP66 - IK08	IP66 - IK08	IP66 - IK08

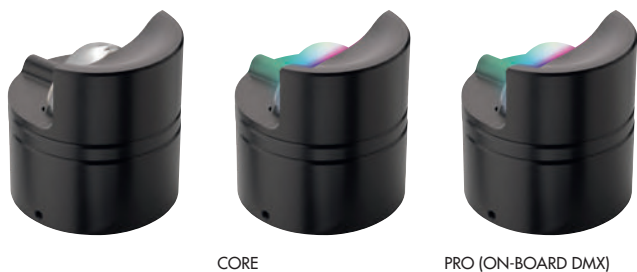
DIMENSIONS



CODE COMPOSITION

	13003	13015	13014
● FINISH	.3 - MATTE BLACK .5 - ANODIZED ALUMINUM	.3 - MATTE BLACK .5 - ANODIZED ALUMINUM	.3 - MATTE BLACK .5 - ANODIZED ALUMINUM
■ LED COLOR	.2 - 2700°K - CRI > 80 .3 - 3000°K - CRI > 80 .4 - 4000°K - CRI > 80	.5 - RGB+W	.5 - RGB+W
▲ BEAM	.71 - 3° X 110°	.71 - 3° X 110°	.71 - 3° X 110°

MOON DIFFUSED



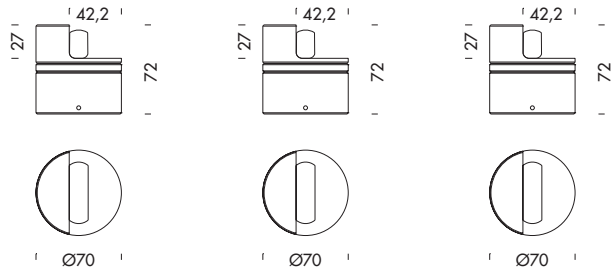
PERFORMANCE DATA

TRUE POWER (W)	5.0W	7.0 (ALL COLORS)	7.0 (ALL COLORS)
TRUE LUMENS (3000K)	202 (.05)	R=12, G=33,	R=12, G=33,
TRUE LUMENS (4000K)	229 (.05)	B=9, W= 29(6500K)	B=9, W=2 9(6500K)
L90 LIFETIME (HRS)	50.000 (Ta 35°C)	60.000 - Ta 35°C	60.000 - Ta 35°C

BUILD DATA

CLASS	III	III	III
NOMINAL VOLTAGE	24V DC - DIMMABLE	24V DC - 4xPWM-CV	24V DC - DMX (RDM)
POWER SUPPLY	SEE END OF SECTION	SEE END OF SECTION	SEE END OF SECTION
EXTERNAL CABLE	SINGLE INPUT	SINGLE INPUT	SINGLE INPUT
	2-POLES NEOPRENE	6-POLES FEP + RUBBER	5-POLES FEP + RUBBER
PROTECTION RATING	IP66 - IK08	IP66 - IK08	IP66 - IK08

DIMENSIONS



CODE COMPOSITION

	13004	13017	13016
● FINISH	.3 - MATTE BLACK .5 - ANODIZED ALUMINUM	.3 - MATTE BLACK .5 - ANODIZED ALUMINUM	.3 - MATTE BLACK .5 - ANODIZED ALUMINUM
■ LED COLOR	.2 - 2700°K - CRI > 80 .3 - 3000°K - CRI > 80 .4 - 4000°K - CRI > 80	.5 - RGB+W	.5 - RGB+W
▲ BEAM	.05 - DIFFUSED	.05 - DIFFUSED	.05 - DIFFUSED